

AWWAM BULLETIN

ISSUE: 48/APR 2026

MAR - APR 2026

AWWAM MESSAGE

Nature Is Not Just a Resource

HOW WE OFTEN SEE NATURE

- Trees → Timber
- Rivers → Water supply
- Land → Development

➡ Nature = Something to use

WHAT HAPPENS WHEN WE OVERUSE

- Pollution of rivers & seas
- Flash floods from clogged drains
- Hotter temperatures
- Loss of wildlife

➡ What we take without care comes back to us

SHIFT OUR MINDSET

Instead of:

✗ "What can we take?"

Start asking:

✔ "How can we protect and sustain?"

SIMPLE ACTIONS, REAL DIFFERENCE

- Bring reusable bags
- Avoid single-use plastics
- Reduce food waste
- Save electricity
- Keep surroundings clean

OUR RESPONSIBILITY

Nature is not just a resource, it is a shared trust (amanah).

Protect it today, preserve it for tomorrow.



Airwastewater Management Sdn Bhd

"AIR, WASTE & WATER", DON'T WASTE THEM!

Editor: Maria Sarman, Nina Ahyar, Daniel Ahyar, AELS

2026 OFFERS

01 Jan - 30 Jun 2026

Terms and conditions apply

Lifetime Offer for 2026

Register for CePSWaM Courses for any dates in 2026 Calendar with Airwastewater Management Sdn Bhd and be assured, we will train you until you PASS BOTH CePSWaM WRITTEN AND PRACTICAL EXAMINATIONS conducted by EIMAS.

CePSWaM Course

- CePSWaM PLASMA, S2 - 20% Off
- CePSWaM Other Venue - 10% Off

CePSWaM-FTR Workshop

- CePSWaM-TRPW PLASMA, S2 - 40% Off
- CePSWaM-TRPW West Malaysia - 30% Off
- CePSWaM-TRPW East Malaysia - 30% Off
- CePSWaM-TRPW Non-AWWAM - 15% Off

SWM Course - Combo

Offer to participants from the same company who register SWM for the same course date.

- Classroom - 1 Pax: RM432.00/person;
2 Pax+: RM378.00/person (inclusive 8% SST)
- Zoom Meeting - 1 Pax: RM216.00/person;
2 Pax+: RM189.00/person (inclusive 8% SST)

OSH-C - Best Value

Offer to participants or company who register OSH-C with AWWAM public date at RM1,026.00/person inclusive 8% SST. Normal Price: RM1,134.00/person (inclusive SST 8%)

CePSWaM + OSH-C - Buy 1 Free 1

Offer to participants or companies who register for the CePSWaM courses conducted at PLASMA, Seremban 2 at the full course fee of RM4,050.00/person inclusive of 8% SST and get the OSH-C course at PLASMA, Seremban 2 FREE OF CHARGE (FOC).

COURSES

CePSWaM Courses

(The pioneer CePSWaM Training Provider for EIMAS, since March 2009)



No class was conducted for March due to Ramadhan Break and in April 2026, six (6) sessions were conducted at Shah Alam, Seberang Prai and Seremban.



06 - 10 April 2026
Hotel De Palma, Shah Alam
(Session 1)



06 - 10 April 2026
Hotel De Palma, Shah Alam
(Session 2)



13 - 17 April 2026
Hotel Seri Malaysia, Prai
(Session 1)



13 - 17 April 2026
Hotel Seri Malaysia, Prai
(Session 2)



20 - 24 April 2026
PLASMA, Seremban 2
(Session 1)



20 - 24 April 2026
PLASMA, Seremban 2
(Session 2)

CePSWaM-FTR Technical Report Preparation Workshop (TRPW)

No class was conducted for March due to Ramadhan Break and in April 2026, one (1) session was conducted via Zoom Meeting and one (1) session was held in Seberang Prai.



03 April 2026
Zoom Meeting



16 - 17 April 2026
Hotel Seri Malaysia, Prai

The Management and Handling of Scheduled Wastes for Industries (SWM)



No class was conducted for March due to Ramadhan Break and on 06 April 2026, one (1) session was conducted at Hotel De Palma, Shah Alam.



Workshop on the Preparation of Scheduled Waste Information (waste card) (WPSWI)

On 03 March 2026, one (1) in-house session was conducted at Tenaga Nasional Berhad, Gebeng.



On April 2026, one (1) session was conducted via Zoom Meeting and one (1) session was held at Seremban.



04 April 2026
Zoom Meeting



09 - 10 April 2026
PLASMA & AELS, Seremban 2



Website



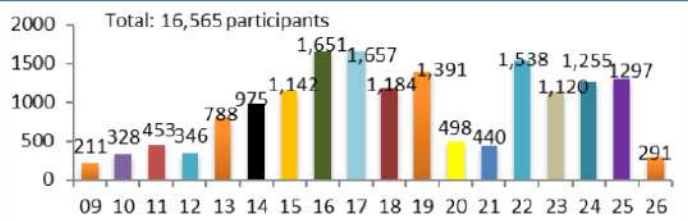
| E-Catalogue |



Portal

STATISTICS

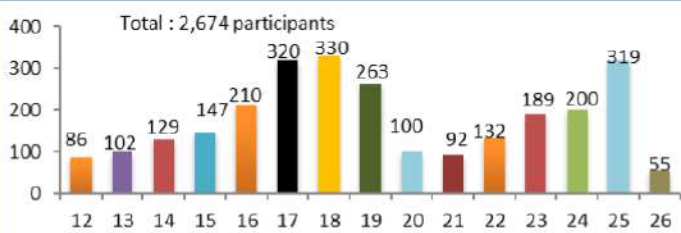
Total number of participants attending CePSWaM Courses from 2009 – 2026



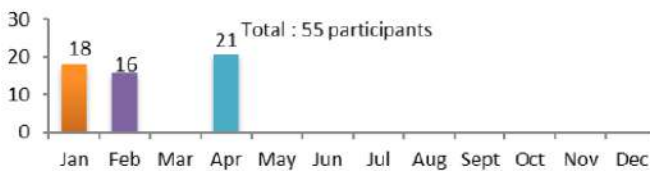
Number of participants attending CePSWaM Courses for Jan – Dec 2026



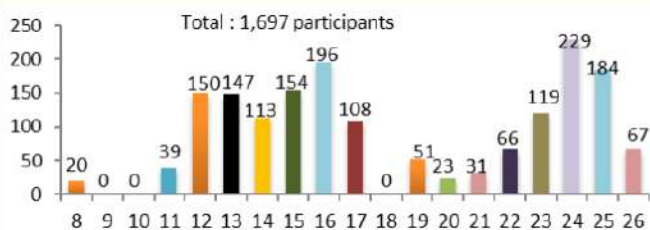
Number of participants attending CePSWaM-FTR Workshops (TRPW) from 2012 – 2026



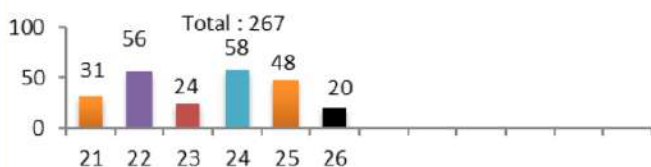
Number of participants attending CePSWaM-FTR Workshops (TRPW) for Jan – Dec 2026



Number of participants attending The Management and Handling of SW Course (SWM) from 2008 - 2026



Number of participants attending Waste Card Preparation Workshop (WPSWI) from 2021 - 2026



ACTIVITIES

World Wildlife Day Alert

On 03 March 2026, a World Wildlife Day poster was circulated to raise awareness among staff.



Buka Puasa for Ramadhan

On 13 March 2026, AWWAM held a Buka Puasa and Terawih prayers at PLASMA, Seremban 2 with AWWAM management, staff and family members in conjunction with Ramadhan.



AWWAM Hari Raya Open House

On 28 March 2026, AWWAM held a Hari Raya Open House to celebrate togetherness with staff and stakeholders. The event fostered unity, appreciation and festive cheer among all attendees at PLASMA, Seremban 2.



AWWAM Earth Day Workstation Eco-Deco Challenge

In conjunction with Earth Day on 22 April 2026, AWWAM organised a Workstation Eco-Deco Challenge among staff to showcase their love for the Earth. The main participation requirements were to include a live plant, a recycled item and an Earth awareness message. Congratulations to the winners!



"Seminar Pematuhan Akta Kualiti Alam Sekeliling 1974"

On 21 - 22 April 2026, AWWAM participated as an exhibitor at a DOE Putrajaya event held at the Bangi Avenue Convention Centre, where it showcased its services through an interactive booth featuring informational materials and direct engagement with visitors. The event provided a valuable platform for AWWAM to connect with government and industry stakeholders and explore potential collaborations while supporting broader sustainability initiatives.



SAFETY MOMENT



Fatigue Is a Hidden Danger

WHAT IS FATIGUE?

- Physical or mental tiredness
 - Reduced alertness and focus
 - Slower reaction time
- ➔ Not just “feeling sleepy”, it affects safety

WHY IT IS DANGEROUS

- ✗ Poor judgement and decision-making
 - ✗ Slips, mistakes and errors
 - ✗ Slower response in emergencies
 - ✗ Higher risk of accidents
- ➔ Fatigue can be as risky as unsafe behavior

WARNING SIGNS

- Frequent yawning
 - Difficulty focusing
 - Repeated small mistakes
 - Feeling mentally “foggy”
- ➔ Your body is telling you to rest

HOW TO MANAGE IT

- Get enough sleep (7–8 hours)
- Take short breaks during work
- Stay hydrated
- Move/stretch regularly
- Use caffeine wisely (not as a replacement for rest)

SAFETY REMINDER

Safety depends not only on surroundings, but also on your **condition and alertness.**

Rest well. Work safely. Stay alert.

GOVERNANCE INSIGHT

Code of Ethics & Business Conduct (COEBC) Series

At AWWAM, compliance with laws and Company policies is fundamental to how we operate. It protects our Company, our colleagues, our customers and ourselves - ensuring that we conduct business ethically, safely and responsibly at all times.

Part 2: Compliance with Laws, Regulations & Company Policies

What Compliance Means for Us

Follow Laws and Regulations

All employees must comply with applicable laws including those related to employment, environmental protection, safety and anti-corruption.

Adhere to Company Policies

Always follow Company policies such as safety, environmental sustainability, anti-bribery, anti-fraud and financial reporting.

Take Responsibility

Carry out your duties with honesty, integrity and in good faith, in line with Company rules and expectations.

Use Company Resources Responsibly

Company property, finances and materials must be used only for legitimate business purposes. Any personal use should be minimal and must never affect performance or ethical standards.

Speak Up

If you observe any misconduct, violation, or unsafe practice, report it promptly. AWWAM is committed to protecting employees who raise concerns in good faith.

Practising Compliance Every Day

Compliance is not just about avoiding mistakes—it is about consistently doing the right thing. Every decision and action you take contributes to AWWAM's reputation as a trusted and responsible organization.

Simple ways to practise compliance:

- Ensure your work aligns with Company policies and legal requirements
- Seek guidance from your supervisor or HR when in doubt
- Report concerns in a timely and appropriate manner
- Safeguard Company assets, data, and confidential information

By complying with laws and Company policies, we protect ourselves, support one another and strengthen the future of AWWAM.

AWWAM
Subsidiaries



sales@awwam.com or 06-6011758
lab@awwam.com or 06-6037053